

Automatic Upper Arm Blood Pressure Monitor M1 Basic (HEM-7121J-AF) م 1 بيسك

Read Instruction manual ① and ② before use.

FR Lire le mode d'emploi ① et ② avant l'utilisation.

DE Lesen Sie vor der Verwendung Gebrauchsanweisung ① und ②.

IT Leggere il manuale di istruzioni ① e ② prima dell'uso.

ES Lea el manual de instrucciones ① y ② antes del uso.

NL Lees gebruiksaanwijzing ① en ② voor gebruik.

RU Прочтите руководство по эксплуатации ① и ② перед использованием.

TR Kullanmadan önce, kullanım kılavuzu ① ve ②'yi okuyun.

PL Przed rozpoczęciem korzystania z ciśnieniomierza należy przeczytać instrukcję obsługi ① i ②.

SV Läs bruksanvisning ① och ② före användning.

AR اقرأ دليل الإرشادات ① و ② قبل الاستخدام.

EN

FR

DE

IT

ES

NL

RU

TR

PL

SV

AR

Symbols

Symboles / Symbole / Simboli / Símbolos /
Symbolen / Символы / Semboller /
Symbole / Symboler / الرمز

Overview

FR Présentation générale

DE Überblick

IT Presentazione del prodotto

ES Descripción general

NL Overzicht

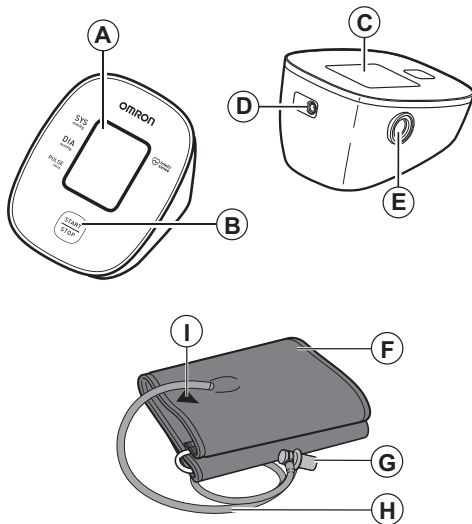
RU Описание прибора

TR Genel Bakış

PL Przegląd

SV Översikt

نظرة عامة **AR**



A	Display FR Affichage DE Display IT Display ES Pantalla NL Display	RU Дисплей TR Ekran PL Wyświetlacz SV Bildskärm الشاشة AR
B	[START/STOP] button FR Bouton [START/STOP] DE [START/STOP]-Taste IT Pulsante [START/STOP] ES Botón [START/STOP] NL Knop [START/STOP]	RU Кнопка [START/STOP] TR [START/STOP] düğmesi PL Przycisk [START/STOP] SV [START/STOP]-knapp الزر [START/STOP] AR (بدء/إيقاف)
C	Battery compartment FR Compartiment des piles DE Batteriefach IT Alloggiamento batteria ES Compartimento de las pilas NL Batterijvak	RU Отсек для элементов питания TR Pil bölümü PL Komora baterii SV Batterifack حجيرة البطاريات AR
D	AC adapter jack FR Prise pour l'adaptateur secteur DE Netzteilanschluss IT Presa per alimentatore CA ES Toma del adaptador de CA NL Netadapteraansluiting	RU Гнездо адаптера переменного тока TR AC adaptörü prizi PL Gniazdko zasilacza SV Nätagadapterjack مقبس مهايئ التيار المتردد AR

E	Air jack	FR Prise à air	RU Воздушное гнездо	
	DE Luftschauchbuchse	TR Hava jakı		
	IT Presa per il tubo dell'aria	PL Przyłącze powietrza		
	ES Toma de aire	SV Luftingång		
	NL Luchtslangaansluiting	مقيس خرطوم الهواء	AR	
F	Arm cuff	FR Brassard	RU Манжета	
	DE Manschette		компрессионная	
	IT Bracciale	TR Kolluk		
	ES Manguito	PL Mankiet		
	NL Armmanchet	SV Manschett	الشريط الضاغط للزراع	AR
G	Air plug	FR Prise de gonflage	RU Воздушный штекер	
	DE Luftschauchstecker	TR Hava tapası		
	IT Attacco del tubo dell'aria	PL Wtyczka przewodu powietrza		
	ES Conector para tubo de aire	SV Luftkontakt	قابس خرطوم الهواء	AR
	NL Plug van de luchtslang			
H	Air tube	FR Tuyau à air	RU Воздуховодная трубка	
	DE Luftschauch	TR Hava borusu		
	IT Tubo dell'aria	PL Przewód powietrza		
	ES Tubo de aire	SV Luftslang		
	NL Luchtslang	خرطوم الهواء	AR	

I	Marker	FR Marker	RU Маркер
	DE Markierung	TR İşaretçi	
	IT Contrassegno	PL Znacznik	
	ES Marcador	SV Markör	
	NL Markering	علامة التحديد	AR

1. Introduction

Thank you for purchasing the OMRON Automatic Upper Arm Blood Pressure Monitor. This blood pressure monitor uses the oscillometric method of blood pressure measurement. This means this monitor detects your blood movement through your brachial artery and converts the movements into a digital reading.

1.1 Safety Instructions

This instruction manual provides you with important information about the OMRON Automatic Upper Arm Blood Pressure Monitor. To ensure the safe and proper use of this monitor, READ and UNDERSTAND all of these instructions. **If you do not understand these instructions or have any questions, contact your OMRON retail outlet or distributor before attempting to use this monitor. For specific information about your own blood pressure, consult with your physician.**

1.2 Intended Use

This device is a digital monitor intended for use in measuring blood pressure and pulse rate in adult patient population. It is mainly designed for general household use.

1.3 Receiving and Inspection

Remove this monitor from the packaging and inspect for damage. If this monitor is damaged, DO NOT USE and consult with your OMRON retail outlet or distributor.

2. Important Safety Information

Read the Important Safety Information in this instruction manual before using this monitor. Follow this instruction manual thoroughly for your safety.

Keep for future reference. For specific information about your own blood pressure, CONSULT WITH YOUR PHYSICIAN.



2.1 Warning

Indicates a potentially hazardous situation which, if not avoided, could result in death or serious injury.

- DO NOT use this monitor on infants, toddlers, children or persons who cannot express themselves.
- DO NOT adjust medication based on readings from this blood pressure monitor. Take medication as prescribed by your physician. ONLY a physician is qualified to diagnose and treat high blood pressure.
- DO NOT use this monitor on an injured arm or an arm under medical treatment.
- DO NOT apply the arm cuff on your arm while on an intravenous drip or blood transfusion.
- DO NOT use this monitor in areas containing high frequency (HF) surgical equipment, magnetic resonance imaging (MRI) equipment, computerized tomography (CT) scanners. This may result in incorrect operation of the monitor and/or cause an inaccurate reading.
- DO NOT use this monitor in oxygen rich environments or near flammable gas.
- Consult with your physician before using this monitor if you have common arrhythmias such as atrial or ventricular premature beats or atrial fibrillation; arterial sclerosis; poor perfusion; diabetes; pregnancy; pre-eclampsia or renal disease. NOTE that any of these conditions in addition to patient motion, trembling, or shivering may affect the measurement reading.
- NEVER diagnose or treat yourself based on your readings. ALWAYS consult with your physician.
- To help avoid strangulation, keep the air tube and AC adapter cable away from infants, toddlers and children.
- This product contains small parts that may cause a choking hazard if swallowed by infants, toddlers and children.

AC Adapter (optional accessory) Handling and Usage

- DO NOT use the AC adapter if this monitor or the AC adapter cable is damaged. If this monitor or the cable is damaged, turn off the power and unplug the AC adapter immediately.
- Plug the AC adapter into the appropriate voltage outlet. DO NOT use in a multi-outlet plug.
- NEVER plug in or unplug the AC adapter from the electric outlet with wet hands.
- DO NOT disassemble or attempt to repair the AC adapter.


Battery Handling and Usage

- Keep batteries out of the reach of infants, toddlers and children.



2.2 Caution

Indicates a potentially hazardous situation which, if not avoided, may result in minor or moderate injury to the user or patient, or cause damage to the equipment or other property.

- Stop using this monitor and consult with your physician if you experience skin irritation or discomfort.
- Consult with your physician before using this monitor on an arm where intravascular access or therapy, or an arteriovenous (A-V) shunt, is present because of temporary interference to blood flow and could result in injury.
- Consult with your physician before using this monitor if you have had a mastectomy or lymph node clearance.
- Consult with your physician before using this monitor if you have severe blood flow problems or blood disorders as cuff inflation can cause bruising.
- DO NOT take measurements more often than necessary because bruising, due to blood flow interference, may occur.
- ONLY inflate the arm cuff when it is applied on your upper arm.
- Remove the arm cuff if it does not start deflating during a measurement.
- DO NOT use this monitor for any purpose other than measuring blood pressure.
- During measurement, make sure that no mobile device or any other electrical device that emit electromagnetic fields is within 30 cm of this monitor. This may result in incorrect operation of the monitor and/or cause an inaccurate reading.
- DO NOT disassemble or attempt to repair this monitor or other components. This may cause an inaccurate reading.
- DO NOT use in a location where there is moisture or a risk of water splashing this monitor. This may damage this monitor.
- DO NOT use this monitor in a moving vehicle such as in a car or on an aircraft.
- DO NOT drop or subject this monitor to strong shocks or vibrations.
- DO NOT use this monitor in places with high or low humidity or high or low temperatures. Refer to section 6.
- During measurement, observe the arm to ensure that the monitor is not causing prolonged impairment to blood circulation.
- DO NOT use this monitor in high-use environments such as medical clinics or physician offices.
- DO NOT use this monitor with other medical electrical (ME) equipment simultaneously. This may result in incorrect operation and/or cause an inaccurate reading.
- Avoid bathing, drinking alcohol or caffeine, smoking, exercising and eating for at least 30 minutes before taking a measurement.
- Rest for at least 5 minutes before taking a measurement.
- Remove tight-fitting or thick clothing from your arm while taking a measurement.
- Remain still and DO NOT talk while taking a measurement.
- ONLY use the arm cuff on persons whose arm circumference is within the specified range of the cuff.
- Ensure that this monitor has acclimated to room temperature before taking a measurement. Taking a measurement after an extreme temperature change could lead to an inaccurate reading. OMRON recommends waiting for approximately 2 hours for the monitor to warm up or cool down when the monitor is used in an environment within the temperature specified as operating conditions after it is stored either at the maximum or at the minimum storage temperature. For additional information on operating and storage/transport temperature, refer to section 6.
- DO NOT use this monitor after the durable period has ended. Refer to section 6.
- DO NOT crease the arm cuff or the air tube excessively.
- DO NOT fold or kink the air tube while taking a measurement. This may cause an injury by interrupting blood flow.
- To unplug the air plug, pull on the plastic air plug at the base of the tube, not the tube itself.
- ONLY use the AC adapter, arm cuff, batteries and accessories specified for this monitor. Use of unsupported AC adapters, arm cuffs and batteries may damage and/or may be hazardous to this monitor.
- ONLY use the approved arm cuff for this monitor. Use of other arm cuffs may result in incorrect readings.
- Inflating to a higher pressure than necessary may result in bruising of the arm where the cuff is applied. NOTE: refer to "If your systolic pressure is more than 210 mmHg" in section 6 of instruction manual  for additional information.
- Read and follow the "Correct Disposal of This Product" in section 7 when disposing of the device and any used accessories or optional parts.

AC Adapter (optional accessory) Handling and Usage

- Fully insert the AC adapter into the outlet.
- When unplugging the AC adapter from the outlet, be sure to safely pull from the AC adapter. DO NOT pull from the AC adapter cable.
- When handling the AC adapter cable:
 - Do not damage it. / Do not break it. / Do not tamper with it.
 - DO NOT pinch it. / Do not forcibly bend or pull it. / Do not twist it.
 - DO NOT use it if it is gathered in a bundle.
 - DO NOT place it under heavy objects.
- Wipe any dust off of the AC adapter.
- Unplug the AC adapter when not in use.
- Unplug the AC adapter before cleaning this monitor.

Battery Handling and Usage

- DO NOT insert batteries with their polarities incorrectly aligned.
- ONLY use 4 "AA" alkaline or manganese batteries with this monitor. DO NOT use other types of batteries. DO NOT use new and used batteries together. DO NOT use different brands of batteries together.
- Remove batteries if this monitor will not be used for a long period of time.
- If battery fluid should get in your eyes, immediately rinse with plenty of clean water. Consult with your physician immediately.
- If battery fluid should get on your skin, wash your skin immediately with plenty of clean, lukewarm water. If irritation, injury or pain persists, consult with your physician.
- DO NOT use batteries after their expiration date.
- Periodically check batteries to ensure they are in good working condition.

2.3 General Precautions

- When you take a measurement on the right arm, the air tube should be at the side of your elbow. Be careful not to rest your arm on the air tube.



- Blood pressure may differ between the right and left arm, and may result in a different measurement value. Always use the same arm for measurements. If the values between both arms differ substantially, check with your physician on which arm to use for your measurements.
- When using an optional AC adapter, make sure not to place your monitor in a location where it is difficult to plug and unplug the AC adapter.

Battery Handling and Usage


- Disposal of used batteries should be carried out in accordance with local regulations.
- The supplied batteries may have a shorter life span than new batteries.



Remember to have a record of your blood pressure and pulse readings for your physician. A single measurement does not provide an accurate indication of your true blood pressure.

Please use the Blood Pressure Diary to keep records of several readings over a certain period of time. To download PDF files of the diary, visit www.omron-healthcare.com.

3. Error Messages and Troubleshooting

If any of the below problems occur during measurement, check to make sure that no other electrical device is within 30 cm. If the problem persists, please refer to the table below.

Display/Problem	Possible Cause	Solution
E1 appears or the arm cuff does not inflate.	The [START/STOP] button was pressed while the arm cuff is not applied.	Press the [START/STOP] button again to turn the monitor off. After inserting the air plug securely and applying the arm cuff correctly, press the [START/STOP] button.
	Air plug is not completely plugged into the monitor.	Insert the air plug securely.
	The arm cuff is not applied correctly.	Apply the arm cuff correctly, then take another measurement. Refer to section 4 of instruction manual (2).
	Air is leaking from the arm cuff.	Replace the arm cuff to the new one. Refer to section 9 of instruction manual (2).
E2 appears or a measurement cannot be completed after the arm cuff inflates.	You move or talk during a measurement and the arm cuff does not inflate sufficiently.	Remain still and do not talk during a measurement. If "E2" appears repeatedly, inflate the arm cuff manually until the systolic pressure is 30 to 40 mmHg above your previous readings. Refer to section 6 of instruction manual (2).
	Due to the systolic pressure is above 210 mmHg, a measurement cannot be taken.	
E3 appears	The arm cuff is inflated exceeding the maximum allowable pressure.	Do not touch the arm cuff and/or bend the air tube while taking a measurement. If inflating the arm cuff manually, refer to section 6 of instruction manual (2).
E4 appears	You move or talk during a measurement. Vibrations disrupt a measurement.	Remain still and do not talk during a measurement.
E5 appears	The pulse rate is not detected correctly.	Apply the arm cuff correctly, then take another measurement. Refer to section 4 of instruction manual (2). Remain still and sit correctly during a measurement.
	 does not flash during a measurement	
Er appears	The monitor has malfunctioned.	Press the [START/STOP] button again. If "Er" still appears, contact your OMRON retail outlet or distributor.

Display/Problem	Possible Cause	Solution
 appears	Batteries are low.	Replacing all 4 batteries with new ones is recommended. Refer to section 3 of instruction manual (2).
 appears or the monitor is turned off unexpectedly during a measurement	Batteries are depleted.	Immediately replace all 4 batteries with new ones. Refer to section 3 of instruction manual (2).
Nothing appears on the display of the monitor.	Battery polarities are not properly aligned.	Check the battery installation for proper placement. Refer to section 3 of instruction manual (2).
Readings appear too high or too low.	Blood pressure varies constantly. Many factors including stress, time of day, and/or how you apply the arm cuff, may affect your blood pressure. Review section 2 of instruction manual (2).	
Any other problem occurs.	Press the [START/STOP] button to turn the monitor off, then press it again to take a measurement. If the problem continues, remove all batteries and wait for 30 seconds. Then re-install batteries. If the problem still persists, contact your OMRON retail outlet or distributor.	

4. Limited Warranty

Thank you for buying an OMRON product. This product is constructed of high quality materials and great care has been taken in its manufacturing. It is designed to give you every satisfaction, provided that it is properly operated and maintained as described in the instruction manual.

This product is warranted by OMRON for a period of 5 years after the date of purchase. The proper construction, workmanship and materials of this product is warranted by OMRON. During this period of warranty OMRON will, without charge for labour or parts, repair or replace the defect product or any defective parts.

The warranty does not cover any of the following:

- A. Transport costs and risks of transport.
- B. Costs for repairs and / or defects resulting from repairs done by unauthorised persons.
- C. Periodic check-ups and maintenance.
- D. Failure or wear of optional parts or other attachments other than the main device itself, unless explicitly warranted above.
- E. Costs arising due to non-acceptance of a claim (those will be charged for).
- F. Damages of any kind including personal caused accidentally or from misuse.
- G. Calibration service is not included within the warranty.
- H. Optional parts have a one (1) year warranty from date of purchase. Optional parts include, but are not limited to the following items: cuff and cuff tube.

Should warranty service be required please apply to the dealer whom the product was purchased from or an authorised OMRON distributor. For the address refer to the product packaging / literature or to your specialised retailer. If you have difficulties in finding OMRON customer services, contact us for information:

www.omron-healthcare.com

Repair or replacement under the warranty does not give rise to any extension or renewal of the warranty period.

The warranty will be granted only if the complete product is returned together with the original invoice / cash ticket issued to the consumer by the retailer.

5. Maintenance

5.1 Maintenance

To protect your monitor from damage, follow the directions below:

Changes or modifications not approved by the manufacturer will void the user warranty.

Caution

DO NOT disassemble or attempt to repair this monitor or other components. This may cause an inaccurate reading.

5.2 Storage

- Store your monitor and other components in a clean, safe location.
- Do not store your monitor and other components:
 - If your monitor and other components are wet.
 - In locations exposed to extreme temperatures, humidity, direct sunlight, dust or corrosive vapors such as bleach.
 - In locations exposed to vibrations or shocks.

5.3 Cleaning

- Do not use any abrasive or volatile cleaners.
- Use a soft dry cloth or a soft cloth moistened with mild (neutral) detergent to clean your monitor and arm cuff, and then wipe them with a dry cloth.
- Do not wash or immerse your monitor and arm cuff or other components in water.
- Do not use gasoline, thinners or similar solvents to clean your monitor and arm cuff or other components.

5.4 Calibration and Service

- The accuracy of this blood pressure monitor has been carefully tested and is designed for a long service life.
- It is generally recommended to have the unit inspected every two years to ensure correct functioning and accuracy. Please consult your authorised OMRON dealer or the OMRON Customer Service at the address given on the packaging or attached literature.

6. Specifications

Product description	Automatic Upper Arm Blood Pressure Monitor		
Product category	Electronic Sphygmomanometers		
Model (code)	M1 Basic (HEM-7121J-AF)	Display	LCD digital display
Cuff pressure range	0 to 299 mmHg	Pulse measurement range	40 to 180 beats / min.
Blood pressure measurement range	20 to 280 mmHg		
Accuracy	Pressure: ± 3 mmHg / Pulse: $\pm 5\%$ of display reading		
Inflation	Automatic by electric pump	Deflation	Automatic pressure release valve
Measurement method	Oscillometric method	Operating mode	Continuous operation
IP classification	Monitor: IP20 / Optional AC adapter: IP21 (HHP-CM01) or IP22 (HHP-BFH01)		
Rating	DC6 V 4.0 W	Applied part	Type BF (arm cuff)
Power source	4 "AA" batteries 1.5 V or optional AC adapter (INPUT AC 100 - 240 V 50 - 60 Hz 0.12 - 0.065 A)		
Battery life	Approximately 1000 measurements (using new alkaline batteries)		
Durable period (Service life)	Monitor: 5 years / Cuff: 5 years / Optional AC adapter: 5 years		
Operating conditions	+10 to +40 °C / 15 to 90% RH (non-condensing) / 800 to 1060 hPa		
Storage / Transport conditions	-20 to +60 °C / 10 to 90% RH (non-condensing)		
Contents	Monitor, arm cuff (HEM-CR24), 4 "AA" batteries, Instruction Manual (1) and (2)		
Protection against electric shock	Internally powered ME equipment (when using only batteries) Class II ME equipment (optional AC adapter)		
Weight	Monitor: approximately 250 g (not including batteries) / Arm cuff: approximately 130 g		
Dimensions (approximately value)	Monitor: 108 mm (W) \times 83 mm (H) \times 140 mm (L) Arm cuff: 145 mm \times 466 mm (air tube: 610 mm)		
Cuff circumference applicable to the monitor	170 to 420 mm (included arm cuff: (220 to 320 mm))	Maximum temperature of the applied part	Lower than 48 °C
Memory	Last measurement		

- Note**
- These specifications are subject to change without notice.
 - This monitor is clinically investigated according to the requirements of EN ISO 81060-2:2014 and complies with EN ISO 81060-2:2014 and EN ISO 81060-2:2019 + A1:2020 (excluding pregnant and pre-eclampsia patients). In the clinical validation study, K5 was used on 85 subjects for determination of diastolic blood pressure.
 - IP classification is degrees of protection provided by enclosures in accordance with IEC 60529. This monitor and optional AC adapter are protected against solid foreign objects of 12.5 mm diameter and greater such as a finger. The optional AC adapter HHP-CM01 is protected against vertically falling water drops which may cause issues during a normal operation. The optional AC adapter HHP-BFH01 is protected against oblique falling water drops which may cause issues during a normal operation.
 - Operating mode is classification in accordance with IEC 60601-1.

7. Correct Disposal of This Product (Waste Electrical & Electronic Equipment)

This marking shown on the product or its literature, indicates that it should not be disposed of, with other household wastes at the end of its working life.

To prevent possible harm to the environment or human health from uncontrolled waste disposal, please separate this product from other types of wastes and recycle it responsibly to promote the sustainable reuse of material resources.

Household users should contact either the retailer where they purchased this product, or their local government office, for details of where and how they can return this item for environmentally safe recycling.

Business users should contact their supplier and check the terms and conditions of the purchase contract. This product should not be mixed with other commercial waste for disposal.



8. Important Information Regarding Electromagnetic Compatibility (EMC)

HEM-7121J-AF conforms to EN60601-1-2:2015 Electromagnetic Compatibility (EMC) standard.

Further documentation in accordance with this EMC standard is available at www.omron-healthcare.com

Refer to the EMC information for HEM-7121J-AF on the website.

9. Guidance and Manufacturer's Declaration

- This blood pressure monitor is designed according to the European Standard EN1060, Non-invasive sphygmomanometers Part 1: General Requirements and Part 3: Supplementary requirements for electromechanical blood pressure measuring systems.
- This OMRON product is produced under the strict quality system of OMRON HEALTHCARE Co., Ltd., Japan. The Core component for OMRON blood pressure monitors, which is the Pressure Sensor, is produced in Japan.
- Please report to the manufacturer and the competent authority of the Member State in which you are established about any serious incident that has occurred in relation to this device.

10. Classification of BP (Blood Pressure)

2018 ESH/ESC* Guidelines for the management of arterial hypertension

Definitions of hypertension by office and home blood pressure levels

	Office	Home
Systolic Blood Pressure	≥ 140 mmHg	≥ 135 mmHg
Diastolic Blood Pressure	≥ 90 mmHg	≥ 85 mmHg

These ranges are from statistical values for blood pressure.

* European Society of Hypertension (ESH) and European Society of Cardiology (ESC).

Warning

NEVER diagnose or treat yourself based on your readings.

ALWAYS consult with your physician.

Symbols Description

FR Description des symboles
DE Beschreibung der Symbole
IT Descrizione dei simboli
ES Descripción de los símbolos
NL Beschrijving van symbolen

RU Описание символов
TR Simgelerin Açıklaması
PL Opis symboli
SV Beskrivning av symboler

AR شرح الرموز



Applied part - Type BF Degree of protection against electric shock (leakage current)

FR Pièce appliquée - Type BF Degré de protection contre les chocs électriques (courant de fuite)
RU Рабочая часть аппарата - Степень защиты от поражения электрическим током (токи утечки) Тип BF

DE Anwendungsteil - Typ BF Schutz vor Stromschlägen (Ableitstrom)
TR Uygulanan parça - Tip BF Elektrik çarpmasına karşı koruma derecesi (kaçak akım)

IT Parti applicate - Tipo BF Livello di protezione contro le folgorazioni (corrente di dispersione)
PL Część wchodząca w kontakt z ciałem pacjenta - typu BF (stopień ochrony przed porażeniem prądem (prąd upływu))

ES Partes en contacto: Tipo BF Grado de protección contra descargas eléctricas (corriente de fuga)
SV Personansluten del - typ BF, grad av skydd mot elstöt (läckström)

NL Toegepast onderdeel - Type BF Niveau van bescherming tegen elektrische schokken (lekstroom)
AR الجزء المطبق: درجة الحماية ضد الصدمات الكهربائية (التيار المتسرب) للنوع BF



Class II equipment.

Protection against electric shock

FR Équipement de classe II. Protection contre les chocs électriques
RU Изделие класса II. Защита от поражения электрическим током

DE Gerät der Klasse II. Schutz vor Stromschlägen
TR Sınıf II ünite. Elektrik çarpmasına karşı koruma

IT Apparecchiatura di Classe II. Protezione contro le folgorazioni
PL Urządzenie klasy II. Ochrona przed porażeniem prądem

ES Equipo de Clase II. Protección contra descargas eléctricas
SV Klass II-apparat. Skydd mot elstöt

NL Apparaatuur van Klasse II. Bescherming tegen elektrische schokken
AR جهاز من الفئة II الحماية ضد الصدمات الكهربائية

IP XX

Ingress protection degree provided by IEC 60529

FR Degré de protection selon CEI 60529
RU Степень защиты, обеспечиваемая оболочками, согласно IEC 60529


DE Grad des Eindringenschutzes gemäß IEC 60529
TR Su girmesine karşı koruma derecesi IEC 60529 tarafından verilmiştir




IT Livello di protezione IP in base a IEC 60529
PL Stopień ochrony wg IEC 60529



ES Grado de protección según la norma internacional IEC 60529
SV Kapslingsklass i enlighet med IEC 60529

NL Beschermingsklasse volgens IEC 60529
AR درجة حماية الدخول المقدمة بواسطة معيار IEC 60529

CE	CE Marking	
	FR Marquage CE DE CE-Kennzeichnung IT Contrassegno CE ES Marcado CE NL CE-merkteken	RU Знак соответствия директиве EC TR CE İşareti PL Oznaczenie CE SV CE-märkning AR علامة التوافق مع اللجنة الأوروبية (CE)
UKCA	UKCA Marking	
	FR Marquage UKCA DE UKCA-Kennzeichnung IT Marchio UKCA ES Marcado UKCA NL UKCA-markering	RU Маркировка UKCA TR UKCA İşareti PL Oznaczenie UKCA SV UKCA-märkning AR UKCA علامة
SN	Serial number	
	FR Numéro de série DE Seriennummer IT Numero di serie ES Número de serie NL Seriennummer	RU Серийный номер TR Seri numarası PL Numer serii SV Seriennummer AR الرقم المتسلسل
LOT	LOT number	
	FR Numéro de LOT DE LOT-Nummer IT Numero di lotto ES Número de lote NL Partijnummer	RU Код (номер) партии TR Parti numarası PL Numer partii SV LOT-nummer AR رقم التشغيل

UDI	Unique device identifier	
	FR Identification unique des dispositifs DE Produktidentifizierungsnummer IT Identificatore univoco del dispositivo ES Identificador único del dispositivo NL Unieke apparaat-ID	RU Уникальный идентификатор устройства TR Benzersiz cihaz tanımlayıcısı PL Unikatowy identyfikator urządzenia SV Unik enhetsidentifierare AR معرف الجهاز الفريد
MD	Medical device	
	FR Dispositif médical DE Medizinprodukt IT Dispositivo medico ES Producto sanitario NL Medisch apparaat	RU Медицинский прибор TR Tıbbi cihaz PL Wyrób medyczny SV Medicinteknisk produkt AR جهاز طبي
	Temperature limitation	
	FR Limitation de température DE Temperaturbegrenzung IT Limite di temperatura ES Limitación de la temperatura NL Temperatuur-begrenzing	RU Температурный диапазон TR Sıcaklık sınırlaması PL Ograniczenia dot. temperatury SV Temperaturgräns AR حدود درجة الحرارة المناسبة

	<p>Humidity limitation</p> <p>FR Limitation d'humidité DE Luftfeuchtigkeitsbegrenzung IT Limite di umidità ES Limitación de la humedad NL Vochtigheidsbegrenzing</p> <p>RU Диапазон влажности TR Nem sınırlaması PL Ograniczenia dot. wilgotności SV Fuktighetsgräns حدود الرطوبة المناسبة AR</p>
	<p>Atmospheric pressure limitation</p> <p>FR Limitation de pression atmosphérique DE Luftdruckbegrenzung IT Limite di pressione atmosferica ES Limitación de la presión atmosférica NL Luchtdrukbegrenzing</p> <p>RU Ограничение атмосферного давления TR Atmosferik basınç sınırlaması PL Ograniczenia dot. ciśnienia atmosferycznego SV Gräns för atmosfäriskt tryck حدود الضغط الجوي المناسب AR</p>
	<p>Indication of connector polarity</p> <p>FR Indication de la polarité des connecteurs DE Anzeige der Steckerpolarität IT Indicazione della polarità dei connettori ES Indicación de la polaridad del conector NL Indicatie van polariteit van aansluiting</p> <p>RU Полярность разъема адаптера TR Bağlantı polarite göstergesi PL Oznaczenie biegunowości złącza SV Indikering av kontaktpoler علامة تشير لقطبية الموصل AR</p>

	<p>For indoor use only</p> <p>FR Pour un usage à l'intérieur uniquement DE Nur für die Nutzung in Innenbereichen IT Solo per uso in interni ES Para uso solo en interiores NL Alleen voor gebruik binnenshuis</p> <p>RU Для использования только внутри помещений TR Sadece iç mekanda kullanım için PL Wyłącznie do użytku wewnętrznego SV Endast för inomhusbruk صالح للاستخدام في المناطق المغلقة فقط AR</p>
 <p>IntelliSense</p>	<p>OMRON's trademarked technology for blood pressure measurement</p> <p>FR Technologie protégée par la marque de commerce OMRON pour la mesure de la pression artérielle DE Markenrechtlich geschützte Technologie von OMRON zur Blutdruckmessung IT Tecnologia brevettata OMRON per la misurazione della pressione arteriosa ES La tecnología de OMRON para medir la presión arterial NL Technologie voor bloeddrukmeting onder handelsmerk van OMRON</p> <p>RU Зарегистрированная технология измерения артериального давления OMRON TR OMRON'un kan basıncı ölçümü için ticari markalı teknolojisisidir PL Opatrzona znakiem towarowym technologia firmy Omron dotycząca pomiaru ciśnienia krwi SV OMRONS varumärksskyddade teknik för blodtrycksmätning تقنية العلامة التجارية OMRON لقياس ضغط الدم AR</p>



Identifier of cuffs compatible for the device

FR Identificateur des brassards compatibles avec l'appareil

DE Kennzeichnung der mit dem Gerät kompatiblen Manschetten

IT Identifica i bracciali compatibili con il dispositivo

ES Identificador para manguitos compatibles con el dispositivo

NL Identificatie van manchetten die compatibel zijn met het apparaat

RU Манжеты совместимые с устройством

TR Cihaz ile uyumlu kollukların tanıtım işareti

PL Sposób identyfikacji mankietów zgodnych z urządzeniem

SV Identifiering av manschetter som är kompatibla med enheten

AR علامات تحديد الشرائط الضاغطة المتوافقة مع الجهاز



Cuff positioning indicator for the left arm

FR Indicateur de positionnement du brassard pour le bras gauche

DE Indikator für die Manschettenposition am linken Arm

IT Indicatore di posizionamento del bracciale per il braccio sinistro

ES Indicador de posición del manguito en el brazo izquierdo

NL Indicator voor positionering van de manchet voor de linkerarm

RU Метка для правильного расположения манжеты на левой руке

TR Sol kol için kolluk konumlandırma göstergesi

PL Wskaźnik umiejscowienia mankietu na lewym ramieniu

SV Indikator för manschettens placering på vänster arm

AR المؤشر الخاص بموضع الشريط الضاغط للذراع الأيسر



Marker on the cuff to be positioned above the artery

FR Repère sur le brassard, à positionner au-dessus de l'artère

DE Markierung auf der Manschette, die oberhalb der Arterie liegen muss

IT Contrassegno sul bracciale da posizionare al di sopra dell'arteria

ES La marca del manguito debe colocarse sobre la arteria

NL Markering op de manchet die boven de slagader moet worden geplaatst

RU Указатель расположения плечевой артерии

TR Kolluk üzerindeki işaretin konumu arterin üzerine gelmelidir

PL Znacznik na mankiecie, wskazujący pozycję umieszczenia nad tętnicą

SV Markör på manschetten som ska placeras ovanför artären

AR علامة بالشريط الضاغط للإشارة إلى وجوب وضعه فوق الشريان

INDEX



Range pointer and brachial artery alignment position

FR Pointeur de plage et position d'alignement sur l'artère brachiale

DE Bereichsanzeiger und Ausrichtungposition mit der Oberarmarterie

IT Puntatore e posizione di allineamento dell'arteria brachiale

ES Indicación de las medidas y posición de alineación con la arteria braquial

NL Bereikaanduiding en positie voor uitlijning met slagader

RU Положение совмещения указателя диапазона и плечевой артерии

TR Aralık işaretçisi ve kol arteri hizalama konumu

PL Wskaźnik zakresu i dostosowania pozycji do tętnicy ramiennej

SV Intervallpekare och justeringsläge för armartären

AR مؤشر النطاق والوضع الخاص بالمحاذاة مع الشريان العضدي



Range indicator of arm circumferences to help selection of the correct cuff size

FR Indicateur de plage de circonférence du bras, pour la sélection de la taille de brassard adaptée

DE Bereichsanzeige für den Armumfang zur Auswahl der richtigen Manschettengröße

IT Indicatore degli intervalli di circonferenze braccio per la scelta della misura di bracciale corretta

ES Indicador de las medidas del perímetro de brazo para ayudarle a seleccionar el tamaño de manguito correcto

NL Bereikindicator voor armomtrek om te helpen bij het kiezen van de juiste manchetmaat



RU Символ диапазона окружности плеча для помощи при подборе правильного размера манжеты


TR Doğru kolluk ölçüsünü bulmaya yardımcı olan kol çevresi aralık göstergesi

PL Wskaźnik zakresu obwodu ramienia pomagający w doborze mankietu o właściwym rozmiarze

SV Intervallindikator för armens omkrets för att underlätta val av rätt manschettstorlek

AR مؤشر نطاق محيط الذراع للمساعدة على تحديد الحجم الصحيح للشريط الضاغط

<p>QUALITY PASS</p> 	<p>Manufacturer's quality control mark</p> <p>FR Marque de contrôle de la qualité du fabricant</p> <p>DE Qualitätskontrollzeichen des Herstellers</p> <p>IT Contrassegno controllo qualità del produttore</p> <p>ES Marca del control de calidad del fabricante</p> <p>NL Symbool voor kwaliteitscontrole van fabrikant</p> <p>RU Отметка производителя о контроле качества</p> <p>TR Üreticinin kalite kontrol işareti</p> <p>PL Znak kontroli jakości producenta</p> <p>SV Tillverkarens kvalitetskontrollmärke</p> <p>AR علامة التحكم في الجودة الخاصة بالشركة المصنعة</p>
<p>LATEX FREE</p>	<p>Not made with natural rubber latex</p> <p>FR Ne contient pas de latex de caoutchouc naturel</p> <p>DE Enthält kein Naturlatex</p> <p>IT Non contiene lattice di gomma naturale</p> <p>ES No contiene látex de caucho natural</p> <p>NL Bevat geen natuurrubberlatex</p> <p>RU Не содержит натуральный латекс</p> <p>TR Doğal kauçuk lateksten üretilmemiştir</p> <p>PL Wyprodukowane bez użycia naturalnego lateksu</p> <p>SV Inte gjord av naturlig gummilatex</p> <p>AR تم التصنيع دون استخدام لاتيكس المعطاط الطبيعي</p>
	<p>Arm circumference</p> <p>FR Circonférence du bras</p> <p>DE Armumfang</p> <p>IT Circonferenza del braccio</p> <p>ES Perímetro de brazo</p> <p>NL Armomtrek</p> <p>RU Окружность плеча</p> <p>TR Kol çevresi</p> <p>PL Obwód ramienia</p> <p>SV Armens omkrets</p> <p>AR محيط الذراع</p>

	<p>Necessity for the user to consult this instruction manual</p> <p>FR L'utilisateur doit consulter le présent mode d'emploi</p> <p>DE Der Benutzer muss diese Gebrauchsanweisung lesen</p> <p>IT L'utente deve consultare il presente manuale di istruzioni</p> <p>ES Es necesario que el usuario consulte este manual de instrucciones</p> <p>NL Noodzaak voor de gebruiker om deze gebruiksaanwijzing te raadplegen.</p> <p>RU Необходимость для пользователя обратиться к данному руководству по эксплуатации</p> <p>TR Kullanıcı, bu kullanım kılavuzuna başvurmalıdır</p> <p>PL Użytkownik powinien zapoznać się z niniejszą instrukcją obsługi</p> <p>SV Användaren måste läsa denna användarhandbok</p> <p>AR ضرورة رجوع المستخدم إلى المعلومات الواردة في دليل الإرشادات هذا</p>
--	--



Need for the user to follow this instruction manual thoroughly for your safety.

FR L'utilisateur doit suivre attentivement ce mode d'emploi pour votre sécurité.

DE Damit die Sicherheit gewährleistet ist, muss der Benutzer diese Gebrauchsanweisung sorgfältig befolgen.

IT Per la propria sicurezza, l'utente deve seguire attentamente il presente manuale di istruzioni.

ES Es necesario que el usuario siga rigurosamente este manual de instrucciones para su seguridad.

NL Noodzaak voor de gebruiker om zich voor de eigen veiligheid zorgvuldig aan deze gebruiksaanwijzing te houden.

RU В целях обеспечения безопасности строго следуйте указаниям в данном руководстве по эксплуатации.

TR Güvenlik açısından kullanıcının bu kullanım kılavuzuna dikkatle uyması gerekir.

PL Dla zachowania bezpieczeństwa użytkownik musi ściśle przestrzegać niniejszej instrukcji obsługi.

SV Användaren måste följa denna bruksanvisning noga av säkerhetsskäl.

AR حاجة المستخدم إلى اتباع الإرشادات الواردة في دليل الإرشادات بالكامل هذا للحفاظ على السلامة.



Direct current

FR Courant continu

DE Gleichstrom

IT Corrente diretta

ES Corriente directa

NL Gelijkstroom

RU Постоянный ток

TR Doğru akım

PL Prąd stały

SV Likström

AR التيار المباشر



Alternating current

FR Courant alternatif

DE Wechselstrom

IT Corrente alternata

ES Corriente alterna

NL Wisselstroom

RU Переменный ток

TR Alternatif akım

PL Prąd zmienny

SV Växelström

AR التيار المتناوب



Date of manufacture

FR Date de fabrication

DE Herstellungsdatum

IT Data di fabbricazione

ES Fecha de fabricación

NL Productiedatum

RU Дата изготовления

TR Üretim tarihi

PL Data produkcji

SV Tillverkningsdatum

AR تاريخ التصنيع



Prohibited action

FR Action interdite

DE Verbotene Aktion

IT Operazione proibita

ES Acción prohibida

NL Verboden handeling

RU Запрещенные действия

TR Yasaklanmış eylem

PL Czynnność niedozwolona

SV Förbjuden åtgärd

AR إجراء محظور

Issue Date:
Date de publication :
Ausgabedatum:
Data di pubblicazione:
Fecha de publicación: 2023-10-24
Uitgiftedatum:
Дата выпуска:
Teslim Tarihi:
Data publikacji:
Utgivningsdatum:
تاريخ الإصدار:

IM1-HEM-7121J-AF-06-04/2023
3275341-2F

Automatic Upper Arm Blood Pressure Monitor

M1 Basic (HEM-7121J-AF)

م 1 بيسك



IM2-HEM-7121J-AF-04-04/2022
3275344-7D

All for Healthcare

Read instruction manual ① and ② before use.

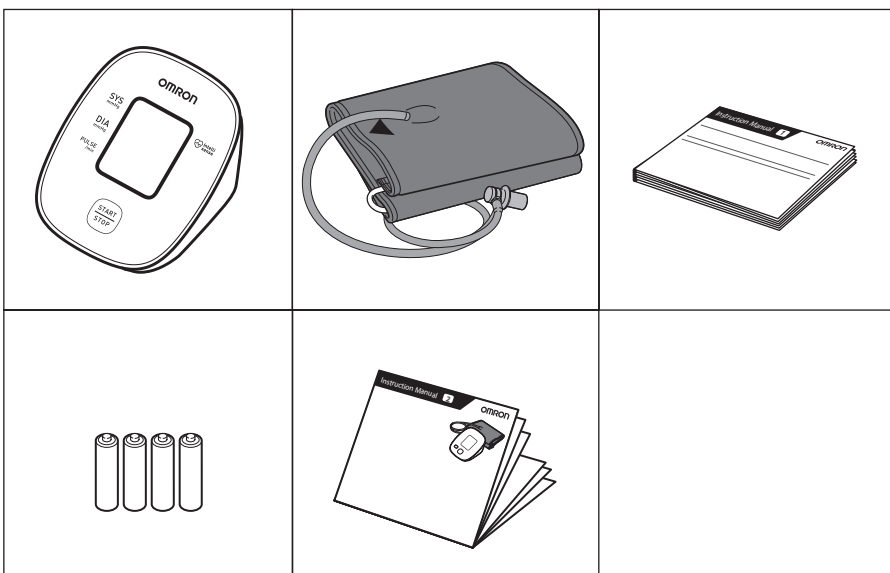
- FR Lire le mode d'emploi ① et ② avant l'utilisation.
- DE Lesen Sie vor der Verwendung Gebrauchsanweisung ① und ②.
- IT Leggere il manuale di istruzioni ① e ② prima dell'uso.
- ES Lea el manual de instrucciones ① y ② antes del uso.
- NL Lees gebruiksaanwijzing ① en ② voor gebruik.
- RU Прочтите руководство по эксплуатации ① и ② перед использованием.
- TR Kullanmadan önce, kullanım kılavuzu ① ve ②'yi okuyun.
- PL Przed rozpoczęciem korzystania z ciśnieniomierza należy przeczytać instrukcję obsługi ① i ②.
- SV Läs bruksanvisning ① och ② före användning.

اقرأ دليل الإرشادات ① و ② قبل الاستخدام.

1 Package Contents

- FR Contenu de l'emballage
- DE Packungsinhalt
- IT Contenuto della confezione
- ES Contenido del envase
- NL Inhoud van de verpakking
- RU Комплект поставки
- TR Paketin İçindekiler
- PL Zawartość opakowania
- SV Förpackningens innehåll

AR محتويات العبوة



2 Preparing for a Measurement

- FR Préparation d'une mesure
- DE Vorbereiten einer Messung
- IT Preparazione per la misurazione
- ES Preparación para una medición
- NL Een meting voorbereiden
- RU Подготовка к измерению
- TR Ölçüm Hazırlığı
- PL Przygotowanie do pomiaru
- SV Förbereda en mätning

AR التجهيز لعملية القياس

30 minutes before

- FR 30 minutes avant
- DE 30 Minuten vorher
- IT 30 minuti prima
- ES 30 minutos antes
- NL 30 minuten ervoor
- RU За 30 минут до
- TR 30 dakika önce
- PL 30 minut przed
- SV 30 minuter innan



AR قبل القياس بمدة تبلغ ٣٠ دقيقة

5 minutes before: Relax and rest.

- FR 5 minutes avant : détente et repos.
- DE 5 Minuten vorher: ruhig hinsetzen.
- IT 5 minuti prima: rilassarsi e stare a riposo.
- ES 5 minutos antes: relajarse y descansar.
- NL 5 minuten ervoor: ontspan en rust.
- RU За 5 минут до: расслабьтесь и отдохните.
- TR 5 dakika önce: Gevşeyin ve dinlenin.
- PL 5 minut przed: odpręż się i odpochnij.
- SV 5 minuter innan: slappna av och vila.

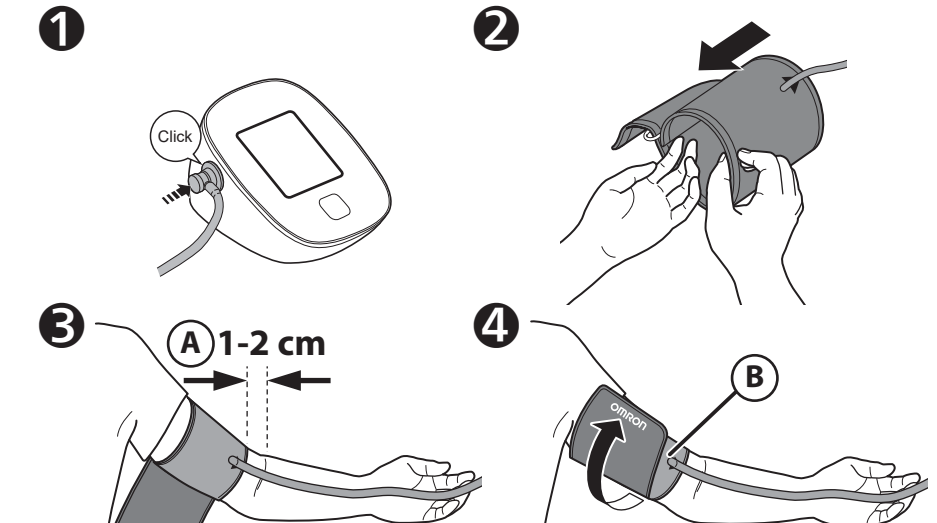
AR قبل القياس بمدة تبلغ ٥ دقائق: استرخ واسترخ.



4 Applying the Cuff on the Left Arm

- FR Pose du brassard sur le bras gauche
- DE Anbringen der Manschette am linken Arm
- IT Applicazione del bracciale sul braccio sinistro
- ES Colocación del manguito en el brazo izquierdo
- NL De manchet op de linkerarm aanbrengen
- RU Расположение манжеты на левой руке
- TR Koluğun Sol Kola Takılması
- PL Zakładanie mankietu na lewe ramię
- SV Sätta på manschetten på vänster arm

AR لف الشريط المضغط على الذراع الأيمن



A Tube side of the cuff should be 1 - 2 cm above the inside elbow.

- FR Le côté tuyau du brassard doit être positionné 1 à 2 cm au-dessus de l'intérieur du coude.
- DE Das Manschettenstück mit dem Schlauch muss 1 bis 2 cm oberhalb des Ellbogens liegen.
- IT Il lato del bracciale con il tubo deve trovarsi al di sopra del gomito interno, a una distanza di circa 1 o 2 cm.
- ES El lado del tubo del manguito deberá quedar 1 o 2 cm por encima de la parte interna del codo.
- NL De kant met de slang van de manchet moet 1 - 2 cm boven de binnenkant van de elleboog liggen.
- RU Край манжеты с трубкой должен находиться на 1–2 см выше локтевого сгиба.
- TR Koluğun boru tarafı, dirsek içinin 1 ila 2 cm üstünde olmalıdır.
- PL Koniec mankietu z podłączonym przewodem powietrza powinien znajdować się 1–2 cm powyżej zgięcia łokcia.
- SV Slangsidan av manschetten ska vara 1–2 cm ovanför insidan av armbågen.

AR يجب أن يرتفع جانب الخرطوم من الشريط المضغط من ١ إلى ٢ سم عن المرفق.

B Make sure that air tube is on the inside of your arm and wrap the cuff securely so it can no longer slip round.

- FR Assurez-vous que le tuyau à air se trouve du côté intérieur de votre bras et enroulez fermement le brassard de manière qu'il ne puisse plus tourner.
- DE Stellen Sie sicher, dass der Luftschlauch an der Arminnenseite sitzt, und befestigen Sie die Manschette sicher, so dass sie nicht verrutscht.
- IT Assicurarsi che il tubo dell'aria si trovi all'interno del braccio e avvolgere il bracciale saldamente in modo che non possa ruotare.
- ES Asegúrese de que el tubo de aire se encuentra en la cara interna del brazo y enrolle el manguito con firmeza para que no pueda deslizarse.
- NL Zorg ervoor dat de luchtslang zich aan de binnenkant van uw arm bevindt en wikkel de manchet stevig rond uw arm zodat deze niet meer kan wegglijden.
- RU Убедитесь, что воздуховодная трубка находится на внутренней поверхности плеча и надежно оберните манжету, чтобы она не прокручивалась вокруг руки.
- TR Hava borusunun kolunuzun iç tarafında olduğundan emin olun ve koluğu kaymayacak şekilde sabit şekilde sarın.
- PL Upewnij się, że przewód powietrza znajduje się po wewnętrznej stronie ramienia i owinać starannie mankieta, aby się nie zsuwał.
- SV Se till att luftslangen sitter på insidan av armen och linda manschetten ordentligt så att den inte längre kan glida runt.

AR تأكد من أن خرطوم الهواء على الجانب الداخلي من ذراعك وف الشريط المضغط بإحكام بحيث لا ينزلق حول الذراع.

If taking measurements on the right arm, refer to:

- FR Pour la prise de mesures au bras droit, voir :
- DE Bei Messungen am rechten Arm siehe:
- IT Se la misurazione viene eseguita al braccio destro, fare riferimento a:
- ES Si va a realizar mediciones en el brazo derecho, consulte:
- NL Als u metingen aan de rechterarm uitvoert, raadpleeg dan:
- RU При измерении на правой руке см:
- TR Sağ koldan ölçüm yapıyorsanız aşağıdakilere bakın:
- PL Pomiar ciśnienia na prawym ramieniu, patrz:
- SV Om du mäter på höger arm, se:

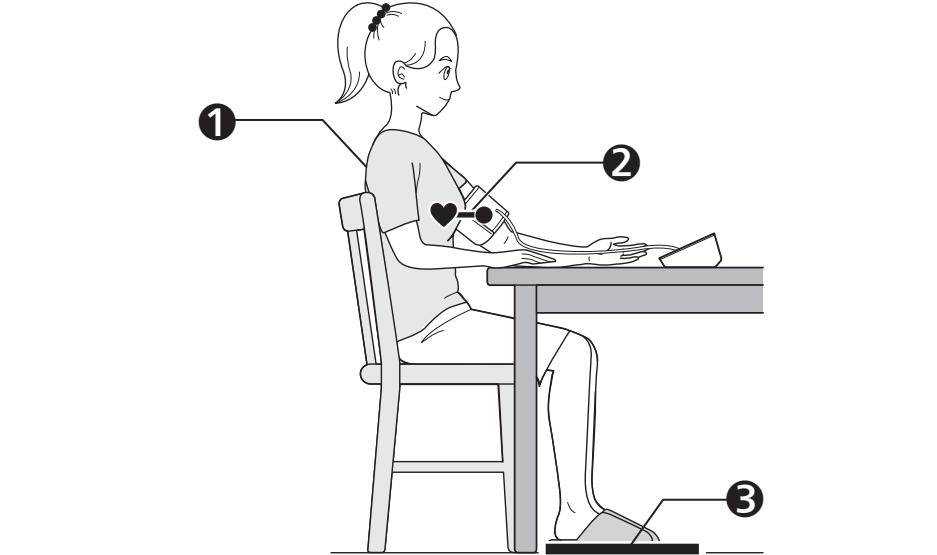


Instruction Manual ①
2.3

5 Sitting Correctly

- FR Position assise correcte
- DE Korrekte Körperhaltung
- IT Come sedere nel modo corretto
- ES Cómo sentarse correctamente
- NL Correct zitten
- RU Сядьте правильно
- TR Düzgün Oturma
- PL Prawidłowa pozycja ciała
- SV Rätt sittställning

AR الجلوس بشكل صحيح



1 Sit comfortably with your back and arm supported.

- FR S'asseoir de façon à ce que le dos et le bras soient bien soutenus.
- DE Bequem hinsetzen, mit dem Rücken anlehnen und den Arm auf eine Unterlage legen.
- IT Sedere comodamente con la schiena e il braccio ben sostenuti.
- ES Siéntese cómodamente de modo que la espalda y el brazo estén bien apoyados.
- NL Neem een comfortabele zitpositie in, met uw rug en arm ondersteund.
- RU Сядьте так, чтобы спина и рука опирались на что-либо.
- TR Sirtınız ve kolunuz desteklenerek şekilde oturun.
- PL Usiąść wygodnie, opierając plecy i ramię.
- SV Sitt bekvämt med stöd för ryggen och armen.

AR اجلس بحيث يكون الظهر والذراع في وضع مستقر.

2 Place the arm cuff at the same level as your heart.

- FR Le brassard doit se trouver au même niveau que votre cœur.
- DE Die Manschette auf Herzhöhe platzieren.
- IT Posizionare il bracciale allo stesso livello del cuore.
- ES Coloque el manguito al mismo nivel que el corazón.
- NL Plaats de armmanschet op hetzelfde niveau als uw hart.
- RU Манжета должна находиться на уровне сердца.
- TR Koluğu kalbinize aynı düzeye getirin.
- PL Mankiet powinien znajdować się na wysokości serca.
- SV Armmanschetten ska vara på samma nivå som hjärtat.

AR ضع الشريط المضغط للذراع في مستوى القلب نفسه.

6 Taking a Measurement

- FR Réalisation d'une mesure
- DE Vornehmen einer Messung
- IT Misurazione
- ES Obtención de una lectura
- NL Een meting doen

- RU Выполнение измерений
- TR Ölçüm Yapma
- PL Wykonywanie pomiaru
- SV Göra en mätning

AR إجراء القياس

If your systolic pressure is more than 210 mmHg:

After the arm cuff starts to inflate, press and hold the [START/STOP] button until the monitor inflates 30 to 40 mmHg higher than your expected systolic pressure.

FR Si votre pression systolique est supérieure à 210 mmHg :

Lorsque le brassard se gonfle, appuyer sur le bouton [START/STOP] et le maintenir enfoncé jusqu'à ce que le tensiomètre atteigne une pression de gonflage supérieure de 30 à 40 mmHg à votre pression systolique attendue.

DE Wenn Ihr systolischer Druck höher ist als 210 mmHg:

Nachdem die Manschette begonnen hat, sich aufzupumpen, drücken Sie die [START/STOP]-Taste, und halten Sie sie gedrückt, bis ein Druck von 30 bis 40 mmHg über Ihrem erwarteten systolischen Druck erreicht ist.

IT Se la pressione sistolica è superiore a 210 mmHg:

Quando il bracciale inizia a gonfiarsi, premere e mantenere premuto il pulsante [START/STOP] finché il misuratore non raggiunge una pressione da 30 a 40 mmHg superiore rispetto al valore di pressione sistolica atteso.

ES En caso de que su presión arterial sistólica esté por encima de 210 mmHg:

Una vez que el manguito comienza a inflarse, mantenga pulsado el botón [START/STOP] hasta que el monitor indique que el inflado está entre 30 y 40 mmHg por encima de la presión arterial sistólica estimada.

NL Als uw systolische druk hoger is dan 210 mmHg:

Zodra de armmanchet wordt opgepompt, houdt u de knop [START/STOP] ingedrukt totdat de meter 30 tot 40 mmHg hoger aangeeft dan uw verwachte systolische druk.

RU Если систолическое давление выше 210 мм.рт.ст.:

После того, как началось автоматическое нагнетание воздуха в манжету, нажмите и удерживайте кнопку [START/STOP] до тех пор, пока электронный блок не поднимет давление до значения, превышающего ожидаемое систолическое давление на 30–40 мм рт. ст.

TR Sistolik basıncınız 210 mmHg'den fazlaysa:

Kolluk şişmeye başladıktan sonra, [START/STOP] düğmesine basın ve ölçüm cihazı beklediğiniz sistolik basınç değerinden 30 ila 40 mmHg daha fazla şişene kadar basılı tutun.

PL Jeśli ciśnienie skurczowe jest wyższe niż 210 mmHg:

Po rozpoczęciu napełniania mankieta nacisnąć i przytrzymać przycisk [START/STOP], aż ciśnieniomierz napompuje mankieta do wartości o 30–40 mmHg wyższej od przewidywanego ciśnienia skurczowego.

SV Om ditt systoliska tryck är högre än 210 mmHg:

När manschetten börjar blåsas upp håller du [START/STOP]-knappen intryckt tills mätaren är uppläst till 30–40 mmHg högre än ditt förväntade systoliska tryck.

AR إذا كان ضغط دمك الانقباضي أكثر من 210 ملليمترات زئبقية:

بعد بدء انتفاخ الشريط الضاغط للذراع، اضغط مع الاستمرار على الزر [START/STOP] (بدء/إيقاف) حتى يقوم الجهاز بالفتح من 30 إلى 40 ملليمترًا زئبقيًا أعلى من قيمة ضغط الدم الانقباضي المتوقعة لديك.

7 Checking Readings

- FR Vérification des résultats
- DE Prüfen der Messwerte
- IT Uso delle funzioni di memoria
- ES Comprobación de lecturas
- NL Metingen bekijken

- RU Проверка результатов
- TR Ölçüm Değerlerini Kontrol Etme
- PL Sprawdzanie odczytów
- SV Kontrollera avläsningar

AR التحقق من القراءات

Systolic blood pressure

- FR Pression artérielle systolique
- DE Systolischer Blutdruck
- IT Pressione sistolica
- ES Presión arterial sistólica
- NL Systolische bloeddruk
- RU Систолическое артериальное давление
- TR Sistolik kan basıncı
- PL Ciśnienie skurczowe krwi
- SV Systoliskt blodtryck

AR ضغط الدم الانقباضي

Diastolic blood pressure

- FR Pression artérielle diastolique
- DE Diastolischer Blutdruck
- IT Pressione diastolica
- ES Presión arterial diastólica
- NL Diastolische bloeddruk
- RU Диастолическое артериальное давление
- TR Diyastolik kan basıncı
- PL Ciśnienie rozkurczowe krwi
- SV Diastoliskt blodtryck

AR ضغط الدم الانقباضي

Pulse rate

- FR Fréquence cardiaque
- DE Pulsfrequenz
- IT Frequenza delle pulsazioni
- ES Frecuencia cardíaca
- NL Hartslag
- RU Частота пульса
- TR Nabız (sayısı)
- PL Tętno
- SV Puls

AR معدل النبض

Error messages or other problems? Refer to:

- FR Messages d'erreur ou autres problèmes ? Voir :
- DE Weitere Fehlermeldungen oder Probleme siehe:
- IT Messaggi di errore o altri problemi? Fare riferimento a:
- ES ¿Hay mensajes de error u otros problemas? Consulte:
- NL Foutmeldingen of andere problemen? Raadpleeg:
- RU Сообщения об ошибках или другие неисправности? См:
- TR Hata mesajları veya başka sorunlar mı var? Bkz:
- PL Komunikaty o błędzie lub inny problem? Przejdź do:
- SV Felmeddelanden eller andra problem? Se:



Instruction Manual ①
3.

AR رسائل الخطأ أو المشكلات الأخرى؟ ارجع إلى:

8 Using Memory Functions

- FR Utilisation des fonctions de mémoire
- DE Verwendung der Speicherfunktionen
- IT Uso delle funzioni di memoria
- ES Uso de las funciones de memoria
- NL Geheugenfuncties gebruiken

- RU Использование функции памяти
- TR Hafıza Fonksiyonunun Kullanılması
- PL Korzystanie z funkcji pamięci
- SV Använda minnesfunktioner

AR استخدام وظائف الذاكرة

8.1 Reading Stored in Memory

- FR Mesure stockée en mémoire
- DE Gespeicherte Messung
- IT Risultato conservato in memoria
- ES Lectura guardada en la memoria
- NL Meting opgeslagen in het geheugen
- RU Сохранение результатов в памяти
- TR Hafızada Saklanan Ölçüm Değeri
- PL Odczyty zapisane w pamięci
- SV Avläsning lagrad i minnet

AR تم تخزين القراءة في الذاكرة

Your last reading is stored.

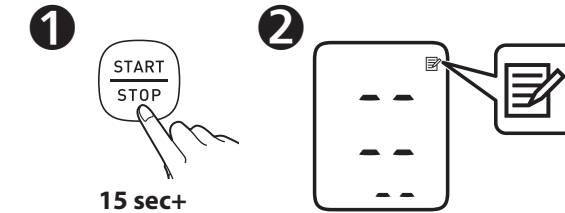
- FR Votre dernière mesure est enregistrée.
- DE Die letzte Messung wird gespeichert.
- IT Viene conservato l'ultimo risultato.
- ES Se ha guardado su última lectura.
- NL Uw laatste meting wordt opgeslagen.
- RU Последний результат сохранен.
- TR Son ölçüm değeriniz saklanır.
- PL Zapisywany jest ostatni odczyt.
- SV Din senaste avläsning lagras.

AR تم تخزين القراءة الأخيرة لك.

8.2 Deleting All Readings

- FR Suppression de toutes les mesures
- DE Löschen aller Messwerte
- IT Cancellazione di tutti i risultati
- ES Eliminación de todas las lecturas
- NL Alle metingen verwijderen
- RU Удаление всех результатов
- TR Tüm Ölçüm Değerlerini Silme
- PL Usuwanie wszystkich odczytów
- SV Radera alla avläsningar

AR حذف جميع القراءات



15 sec+

9 Optional Medical Accessories

- FR Accessoires médicaux optionnels
- DE Optionales medizinisches Zubehör
- IT Accessori medicali opzionali
- ES Accesorios médicos opcionales
- NL Optionele medische accessoires

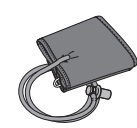
- RU Дополнительно принадлежности
- TR Opsiyonel Tıbbi Aksesuarlar
- PL Opcjonalne akcesoria medyczne
- SV Valfrtia medicinska tillbehör

AR الملحقات الطبية الاختيارية

Arm Cuff



(HEM-RML31)
22 - 42 cm

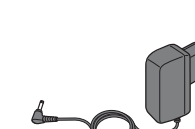


(HEM-CS24)
17 - 22 cm

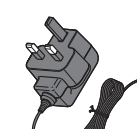


(HEM-CR24)
22 - 32 cm

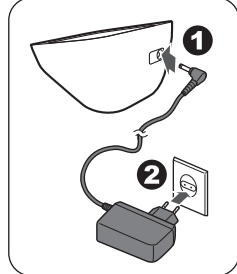
AC Adapter



(HHP-CM01)



(HHP-BFH01)



Do not throw the air plug away. The air plug can be applicable to the optional cuff.

- FR Ne pas jeter la prise de gonflage. La prise de gonflage peut être utilisée pour le brassard en option.
- DE Entsorgen Sie den Luftslauchstecker nicht. Der Luftslauchstecker wird für die optionale Manschette verwendet.
- IT Non gettare via l'attacco del tubo dell'aria. L'attacco del tubo dell'aria può essere applicato al bracciale opzionale.
- ES No tire el conector para tubo de aire. El conector para tubo de aire puede ser utilizado con el manguito opcional.
- NL Gooi de plug van de luchtslang niet weg. De plug van de luchtslang kan worden gebruikt op de optionele manchet.
- RU Не выбрасывайте воздушный штекер. Он может подойти к дополнительной манжете.
- TR Hava tıpasını atmayın. Hava tıpası isteğe bağlı kolluğa uygulanabilir.
- PL Nie wyrzucać wtyczki przewodu powietrza. Wtyczkę przewodu powietrza można podłączyć do opcjonalnego mankieta.
- SV Kasta inte bort luftkontakten. Luftkontakten kan användas på den valfria manschetten.

AR لا تتخلص من سداة الهواء. يمكن استعمال سداة الهواء مع الشريط الضاغط الاختياري.

https://www.omron-healthcare.com/

	Manufacturer Fabricant Hersteller Produttore Fabricante Fabrikant	Производитель Üretici Producent Tillverkare الشركة المصنعة	OMRON HEALTHCARE Co., Ltd. 53, Kunotsubo, Terado-cho, Muko, KYOTO, 617-0002 JAPAN شركة امرون هيلث كير المحدودة مركز كوناوتسو، ترادو-شو 617-0002 اليابان
--	--	--	--

EC REP	EU-representative Mandataire dans l'UE EU-Repräsentant Rappresentante per l'UE Representante en la UE Vertegenwoordiging in de EU	Представитель в ЕС AB temsilcisi Przedstawiciel handlowy w UE EU-representant جهة التمثيل بالاتحاد الأوروبي	OMRON HEALTHCARE EUROPE B.V. Scorpius 33, 2132 LR Hoofddorp, THE NETHERLANDS www.omron-healthcare.com
---------------	--	---	---

Importer in EU Importateur dans l'UE Importeur in der EU Importatore per l'UE Importador en la UE Importeur in de EU	Импортер в ЕС AB'de İthalatçı Importer na terenie UE Importör i EU المستورد في الاتحاد الأوروبي	OMRON HEALTHCARE MANUFACTURING VIETNAM CO., LTD. No.28 VSIP II, Street 2, Vietnam-Singapore Industrial Park II, Binh Duong Industry-Services-Urban Complex, Hoa Phu Ward, Thu Dau Mot City, Binh Duong Province, Vietnam
---	---	--

Production facility Site de production Produktionsstätte Stabilimento di produzione Planta de producción Productiefaciliteit	Производственное подразделение Üretim Tesisi Siedziba produkcji Produktionsenhet منشأة التصنيع	OMRON HEALTHCARE UK LTD. Opal Drive, Fox Milne, Milton Keynes, MK15 0DG, UK www.omron-healthcare.com/distributors
---	--	--

Subsidiaries Succursales Niederlassungen Consociate Empresas filiales Dochterondernemingen Филиалы Yan Kuruluşlar Filial Dotterbolag الشركات التابعة	Importer in the United Kingdom and UK responsible person Importateur au Royaume-Uni et la personne responsable au Royaume-Uni Importeur im Vereinigten Königreich und Verantwortliche Person für UK Importatore per il Regno Unito e Responsabile in UK Importador en el Reino Unido y persona responsable en el RU Importeur voor het Verenigd Koninkrijk en verantwoordelijke in het VK Импортер в Великобританию и лицо, ответственное за работу с Великобританией Birleşik Krallık'taki İthalatçı ve Birleşik Krallık sorumlusu Importer i osoba odpowiedzialna na terenie Wielkiej Brytanii Importör i Storbritannien och ansvarig person i Storbritannien الجهة المستوردة في المملكة المتحدة والشخص المسؤول في المملكة المتحدة	OMRON MEDIZINTECHNIK HANDELSGESELLSCHAFT mbH / OMRON SANTÉ FRANCE SAS www.omron-healthcare.com/distributors
--	--	---

Issue Date / Date de publication / Ausgabedatum / Data di pubblicazione / Fecha de publicación / Uitgiftedatum / Дата выпуска / Teslim Tarihi / Data publikacji / Utgivningsdatum / تاريخ الإصدار	2022-06-23	Made in Vietnam / Fabriqué en Vietnam / Hergestellt in Vietnam / Prodoto in Vietnam / Fabricado en Vietnam / Geproduceerd in Vietnam / Сделано во Вьетнаме / Vietnam'da Üretilmiştir / Wyprodukowano w Vietnamie / Tillverkad i Vietnam / صنع في فيتنام
--	------------	---