

Instruction Manual

Cuff, Blood Pressure

OMRON

Small size adult arm cuff Model:HEM-CS19
Medium size adult arm cuff Model:HEM-CR19
Large size adult arm cuff Model:HEM-CL19

Issue Date: 2022-09-09
 IM-HEM-CS-CR-CL19-05-09/2022
 5335066-0E

Read all of the instructions in the manual before you operate the unit and keep the manual near the unit at all the times for future reference. Refer to the manual of your Blood Pressure Monitor.

Disclaimer

Our company assumes no responsibility for the following:

- Failures, damage, or injuries due to maintenance or repair work performed by other than our company or a company that we specify.
- Failures or damage to one of our product caused by a product of another manufacturer not delivered by us.
- Failures, damage, or injuries due to maintenance or repair work using a repair part other than a part that we specify.
- Failures, damage, or injuries caused by failure to observe the safety instructions and operational procedures given in this manual.
- Use of the product in conditions that do not conform to the product usage conditions indicated in this manual, including installation.
- Failures, damage, or injuries due to modification or inappropriate repair of the product.
- Failures, damage, or injuries due to natural calamities such as fire, earthquake, flooding, or lightning.

Principles

- The contents of this manual are subject to change without notice.
- Considerable care has been taken in the preparation of this manual. In the unlikely event that an error or other problem is discovered in the manual, please contact us.
- Unauthorized reproduction of all or part of this manual is prohibited. Use other than individual (corporate) use without the permission of our company is prohibited by copyright.

Trademark

Product brand names shown in this manual are likely to be the trademark or registered trademark of the company concerned.

Warning

Do not attach the cuff to an arm on which intravenous drip infusion or blood transfusion is being performed.



Requests from OMRON

- Do not attach the cuff to a patient under the use of a pump oxygenator.
- Do not inflate the cuff without attaching it to an arm.
- Do not use a damaged cuff.

Intended Use

This item is used only for Non-Invasive Blood Pressure Monitor HEM-907/HEM-9000A1.

Using Population

Legally certified medical experts, such as doctor, nurse and ME.

Patient Population

It is used on adult patients only.

Environment

The instrument is used in a vascular laboratory, clinic, hospital, doctor's offices, and other medical facilities where the non-invasive peripheral vascular test is conducted.

Precautions for use

Warnings and cautions described in the instruction manual should be observed.

Manufacturer 	OMRON HEALTHCARE Co., Ltd. 53, Kunotsubo, Terado-cho, Muko, KYOTO, 617-0002 JAPAN
EU-representative EC REP	OMRON HEALTHCARE EUROPE B.V. Scorpius 33, 2132 LR Hoofddorp, THE NETHERLANDS www.omron-healthcare.com
Importer in EU	
Asia Pacific HQ	OMRON HEALTHCARE SINGAPORE PTE LTD. www.omronhealthcare-ap.com
Importer in the United Kingdom and UK responsible person	OMRON HEALTHCARE UK LTD. Opal Drive, Fox Milne, Milton Keynes, MK15 0DG, UK www.omron-healthcare.com/distributors
Subsidiaries	OMRON MEDIZINTECHNIK HANDELSGESELLSCHAFT mbH www.omron-healthcare.com/distributors OMRON SANTÉ FRANCE SAS www.omron-healthcare.com/distributors

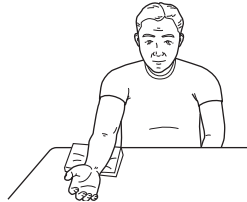
Made in Japan

How to Apply the Arm Cuff

1. Select a cuff appropriate for the patient.

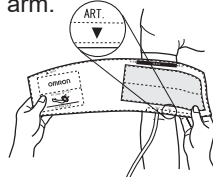
Arm circumference	Size of the arm cuff
17 - 22 cm	Small size adult arm cuff
22 - 32 cm	Medium size adult arm cuff
32 - 42 cm	Large size adult arm cuff

- Use a suitable cuff size. Otherwise, incorrect measurement may result.
2. Securely connect the air tube.
When the air tube is extended with an additional air tube of 1.0m or 1.3m, the entire length will be 1.2m or 1.5m respectively.
 3. Have the patient ready to wear an arm cuff.
 - The arm cuff must be attached on the right upper arm.
 - If the arm cuff is wrapped over a thick cloth or the patient's sleeve is rolled up and pressure is applied on the arm, an accurate measurement result will not be obtained.
 4. Have the patient rest the arm with the palm facing up.

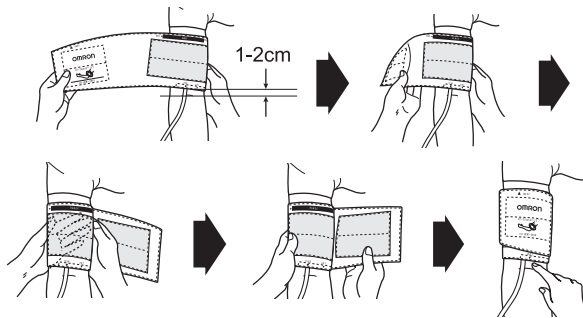


5. Place the cuff on the upper part of the arm.

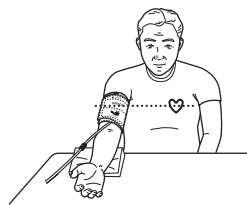
Align the artery position mark on the arm cuff with the artery on the inner side of the upper arm.



6. The lower edge of the arm cuff must be placed 1 to 2 cm above the inner side of elbow joint.
 - If the arm cuff is not securely wrapped, patient may feel numbness on the arm, or an accurate measurement result will not be obtained.
 - The cuff does not have to be wrapped aligning the edges. Still correct measurement will be obtained.



7. Keep the arm with the cuff attached at the level of the heart.



Maintenance Procedures

To clean the cuff, use a damp cloth moistened with water, diluted disinfectant alcohol or diluted neutral detergent.

Symbols description	
	CE Marking
	UKCA Marking
	LOT number
	Unique device identifier
	Medical device
	Temperature limitation
	Humidity limitation
	Atmospheric pressure limitation
	Range pointer and brachial artery alignment position
	Artery mark
	Range indicator of arm circumferences to help selection of the correct cuff size
	Reference catalogue number
	Date of manufacture
	Need for the user to consult the instruction manual
	Arm circumference

Product production date is integrated in the Lot number, which is placed on the product and/or sales package: the first 4 digits mean year of production, the next 2 digits mean month of production and the last 2 digits mean day of production.

Specifications

Product description	Small size adult arm cuff	Medium size adult arm cuff	Large size adult arm cuff
Model	HEM-CS19	HEM-CR19	HEM-CL19
Arm circumference	17 - 22 cm	22 - 32 cm	32 - 42 cm
Cuff dimensions (approximately value)	111 x 357 mm	146 x 517 mm	174 x 649 mm
Cuff pressure range	Pressure: 0 to 299 mmHg		
Accuracy	Pressure: ± 3 mmHg		
Classification	Class I		
Operating conditions	+10 to +40 °C, 15 to 90 % RH (non-condensing), 700 to 1060 hPa		
Storage/Transport conditions	-20 to +60 °C, 10 to 95 % RH (non-condensing), 700 to 1060 hPa		
Package contents	Cuff, instruction manual		
Durable period (Service life), Warranty	1 year		



- Please report to the manufacturer and the competent authority of the Member State in which you are established about any serious incident that has occurred in relation to this device.